

ACCESSIBILITY AND COMFORT (PRM)



MorethanWater

Life expectancy is increased not only through medical advances, but also by improving the design of products adapted to every need and situation. The quality and longevity of our lives have increased significantly in recent years, leading the way to a society with a fast-growing number of octogenarians.

Ageing is a problem that affects us all, not only because people over 65 are expected to reach above 30% of the population by 2050, but also because *it is our duty to take care of the elderly people around us.*

When the passage of time affects both mobility and independence, it becomes necessary to adapt the way of life of the affected person. One of the first actions to be taken is to renovate the bathroom.

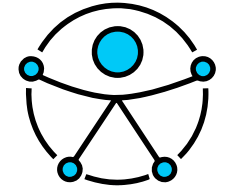
PRM products make it easier for our elders to be independent by giving them the confidence they need in their daily routine.





in search of

Universal design



The purpose of universal design is to simplify everyday tasks by building products, services and environments that are easier to use by all and require no effort. Universal design, therefore, benefits people of all ages and abilities.

Principles of universal design

Some authors, a group of architects, product designers, engineers and environmental design researchers have collaborated to establish the following principles of universal design as a guide in a range of design disciplines, including the environment, products and communications:

1. Equitable use: the design should be user-friendly and suitable for all people, regardless of their skills and abilities.
2. Flexibility: the design should be able to adapt to a wide range of individual preferences and abilities.
3. Simple and intuitive use: the design should be easy to understand regardless of the user's experience, knowledge, skills or level of concentration.
4. Perceptible information: the design should be able to exchange information with the user, regardless of the environmental conditions or sensory capabilities of the user.
5. Tolerance for error: the design should minimise accidental or fortuitous actions that may have fatal or unwanted consequences.
6. Low physical effort: the design should be able to be used effectively and with the minimum effort possible.
7. Size and space for approach and use: sizes and spaces should be appropriate for the user's reach, handling and use, regardless of their size, position and mobility.



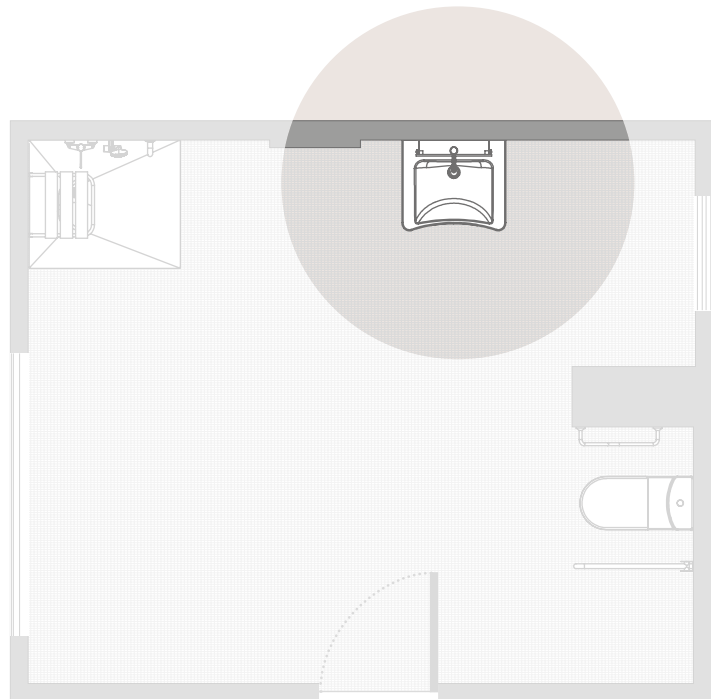
Accessibility is the first thing to take into account when designing an accessible bathroom. We need a clear, barrier-free path without loose objects such as carpets or other elements that may make entry difficult. The door should be wide enough for a wheelchair to fit through. The door should open outwards so as not to hinder exit during an emergency. The handle should be easy to operate. The floor must be non-slip. It is easy to find yourself standing on a wet floor in the bathroom, which can become slippery if the floor is not the right kind.



01

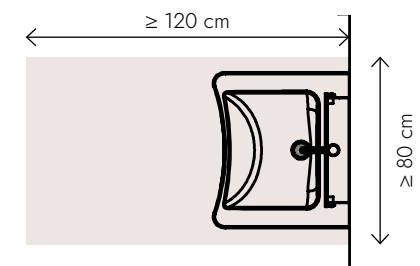
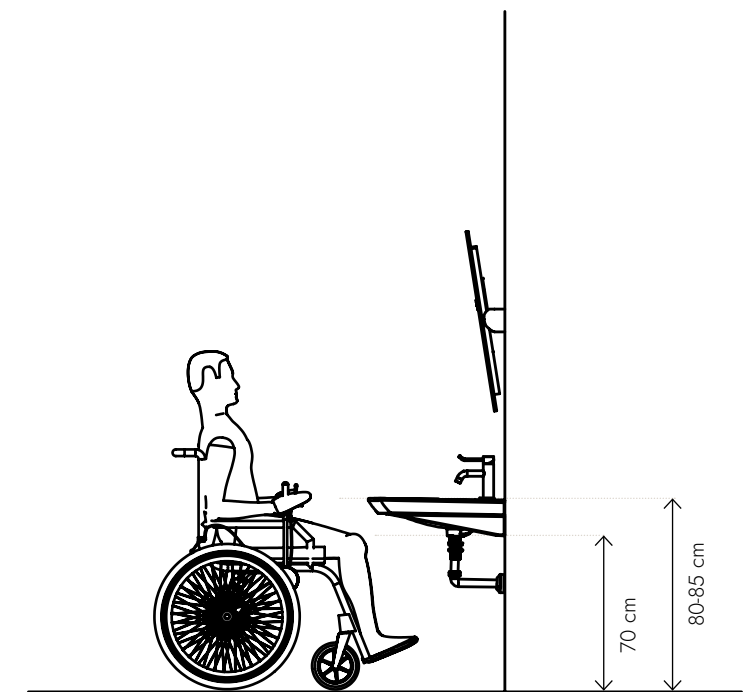
sink area

Sinks should be installed at a height suitable for the elderly. The bottom should be left hollow in case wheelchair access is required. Reclining mirrors are useful for adapting to the different heights.





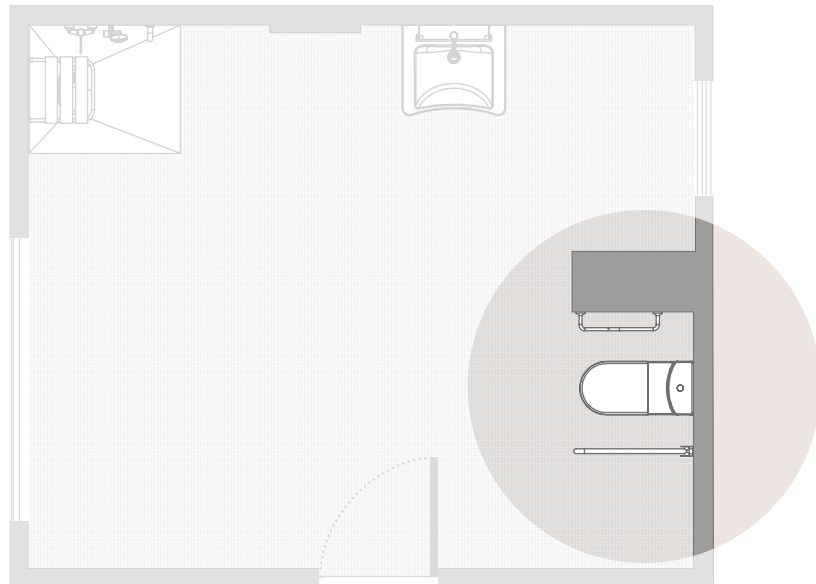
sink area



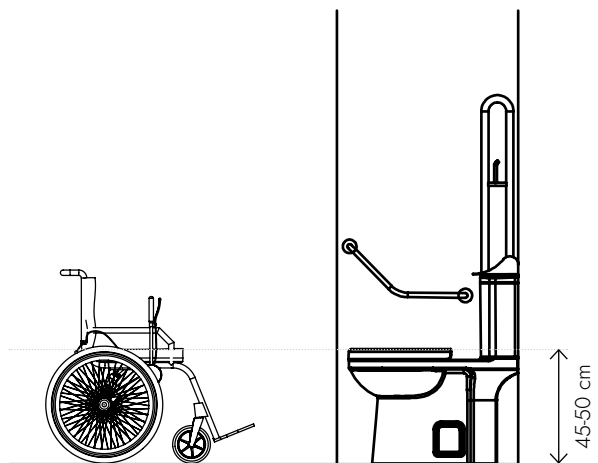
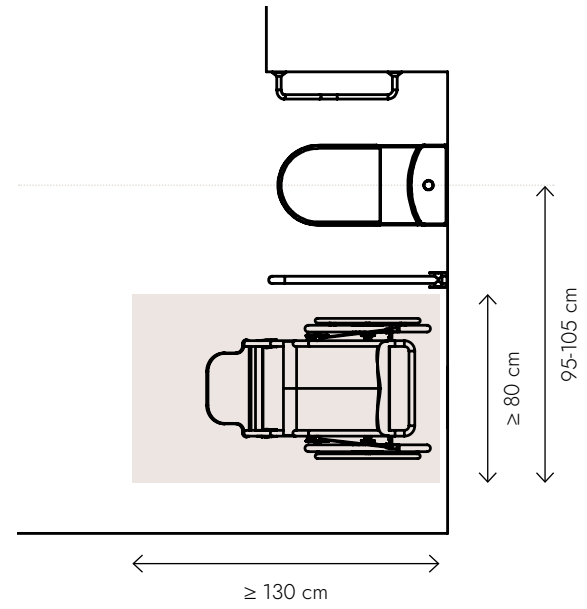
02

toilet area

As muscle tone reduces, it can become harder to sit down on or stand up from the toilet. That is why we recommend installing it at a higher height if it is a wall-hung toilet or purchasing taller toilets if it is a floor-standing toilet. Of course, they must be fixed securely to the floor or wall. We recommend adding support bars to help to stand up or sit down.



toilet area





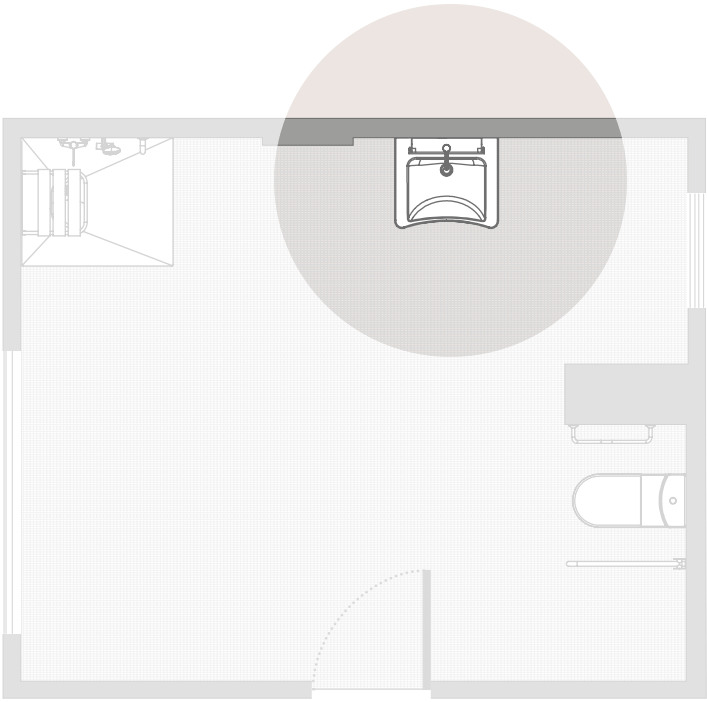
03

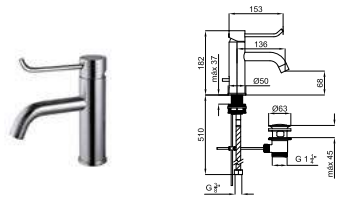
brassware

Lever taps help mobility because they ease access and reduce the force needed to operate them.

TOUCHLESS

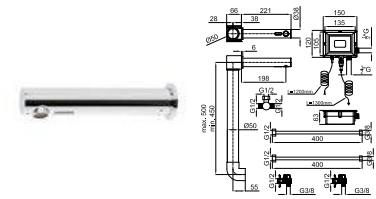
Sensor taps are easy to operate, as no physical contact is required. They also make the bathroom more hygienic and safer. They save on water consumption, as you can turn them off while washing your hands without you even having to touch the taps.





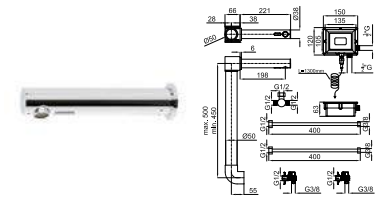
100235255 cromo

EASY. Monomando lavabo con cartucho cerámico de Ø35 mm, conexiones de 3/8", una longitud de los latiguillos de 450 mm, con vaciador automático y aireador "plus". Maneta sanitaria. El caudal a 3 bares es de 12 l/min.



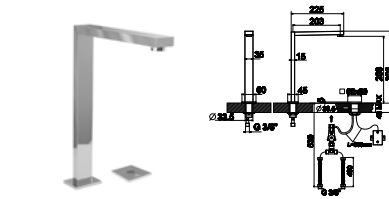
- 100286631** cromo
- 100286579** negro
- 100286621** cobre
- 100286578** titanio
- 100286622** cobre cepillado
- 100286614** titanio cepillado

ROUND. ROUND - Grifería lavabo electrónica con 2 entradas de agua, conexión de 1/2", sin vaciador. 220V-6V, 50Hz. El caudal a 3 bares es de 5,2 l/min. Filtros incluidos.



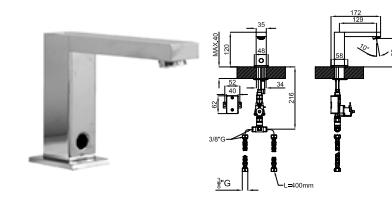
- 100286623** cromo
- 100286588** negro
- 100286596** cobre
- 100286630** titanio
- 100286595** cobre cepillado
- 100286586** titanio cepillado

ROUND. ROUND - Grifería lavabo electrónica con 2 entradas de agua, conexión de 1/2", sin vaciador. Batería 4x1,5V (AA). El caudal a 3 bares es de 5,2 l/min. Pilas y filtros incluidos.



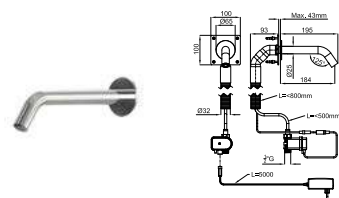
100038713 cromo

IRTA. Grifo lavabo electrónico. Conexiones de 3/8", sin vaciador y aireador "plus". Incluye sensor remoto independiente. Batería 1 x 6V (CRP2). El caudal a 3 bares es de 5 l/min.



100038714 cromo

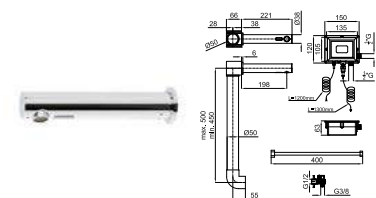
IRTA. Grifo lavabo electrónico con conexiones de 3/8", sin vaciador y aireador "plus". Lleva dos entradas de agua y la regulación de la temperatura solo es accesible bajo la encimera. Batería 6"AA"x1,5V (9V). El caudal a 3 bares es de 5 l/min.



100308538 cromo

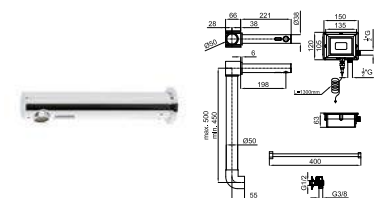
100308562 acero inox satinado

ROUND. Grifería caño encastre modelo Round, a batería 9V(LR61), para agua fría o premezclada, 4.0 L/M (1.0GPM), 0.5-5.0 bar (7- 72.5 PSI), rango del sensor 35-155 mm +- 10 mm 1.38-6.10" +-0.39" (personalizable con el mando de control opcional 100038795), Tmax 70°C, autoapagado 90s (ajustable por control remoto), transformador EU-100305240 incluido.



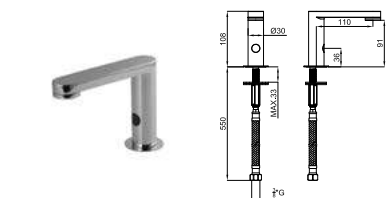
- 100238445** cromo
- 100286632** negro
- 100286602** cobre
- 100286616** titanio
- 100286600** cobre cepillado
- 100286556** titanio cepillado

ROUND. ROUND - Grifería lavabo electrónica con 1 entrada de agua, conexión de 1/2", sin vaciador. 220V-6V, 50Hz. El caudal a 3 bares es de 5,2 l/min. Filtros incluidos.



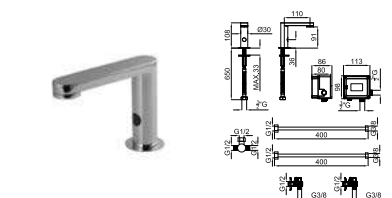
- 100238453** cromo
- 100286624** negro
- 100286634** cobre
- 100286605** titanio
- 100286604** cobre cepillado
- 100286633** titanio cepillado

ROUND. ROUND - Grifería lavabo electrónica con 1 entrada de agua, conexión de 1/2", sin vaciador. Batería 4x1,5V (AA). El caudal a 3 bares es de 5,2 l/min. Pilas y filtros incluidos.



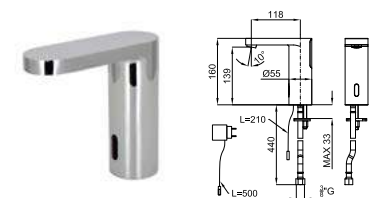
100184771 cromo

TONO. Grifería lavabo electrónica con 1 entrada de agua, conexiones de 3/8", Batería 4x1,5V (AA). El caudal a 3 bares es de 5.5 l/min. Pilas y filtros incluidos.



100286615 cromo

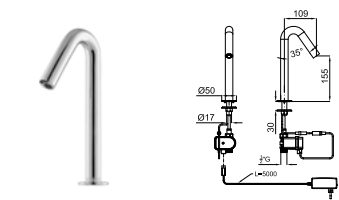
TONO. Grifería lavabo electrónica con 2 entradas de agua, conexiones de 3/8". Batería 4x1,5V (AA). El caudal a 3 bares es de 5.5 l/min. Pilas y filtros incluidos.



100305314 cromo

100305292 negro mate

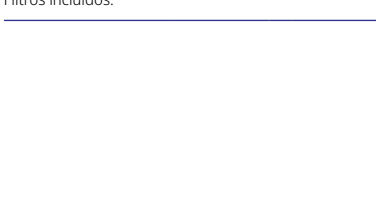
HOTELS. HOTELS - Grifería lavabo electrónica con 1 entrada de agua, conexión de 3/8", sin vaciador y con aireador "plus". Incluye transformador AC/DC 100-240V. El caudal a 3 bares es de 5 l/min.



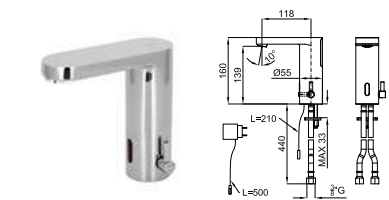
100308557 cromo

100308571 acero inox satinado

ROUND. Grifería caño apoyo modelo Round, a batería 9V(LR61), para agua fría o premezclada, 1.89 L/M (0.5GPM), 0.5-5.0 bar (7- 72.5 PSI), rango del sensor 30-100 mm +- 10 mm 1.18-3.94" (personalizable con el mando de control opcional 100038795), Tmax 70°C, autoapagado 90s (ajustable por control remoto), transformador EU-100305240 incluido.



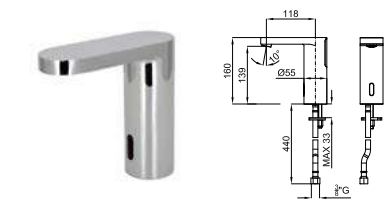
- 100305322** cromo
- 100305323** negro mate



100305322 cromo

100305323 negro mate

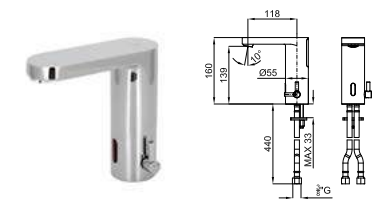
HOTELS. HOTELS - Grifería lavabo electrónica con 2 entradas de agua, conexiones de 3/8", sin vaciador y con aireador "Plus". Incluye transformador AC/DC 100-240V. El caudal a 3 bares es de 5 l/min.



100114431 cromo

100305304 negro mate

HOTELS. HOTELS - Grifería lavabo electrónica con 1 entrada de agua, conexión de 3/8", sin vaciador y con aireador "plus". Batería 3V. El caudal a 3 bares es de 5 l/min.



100108285 cromo

100305293 negro mate

HOTELS. HOTELS - Grifería lavabo electrónica con 2 entradas de agua, conexiones de 3/8", sin vaciador y con aireador "Plus". Batería 3V. El caudal a 3 bares es de 5 l/min.



04

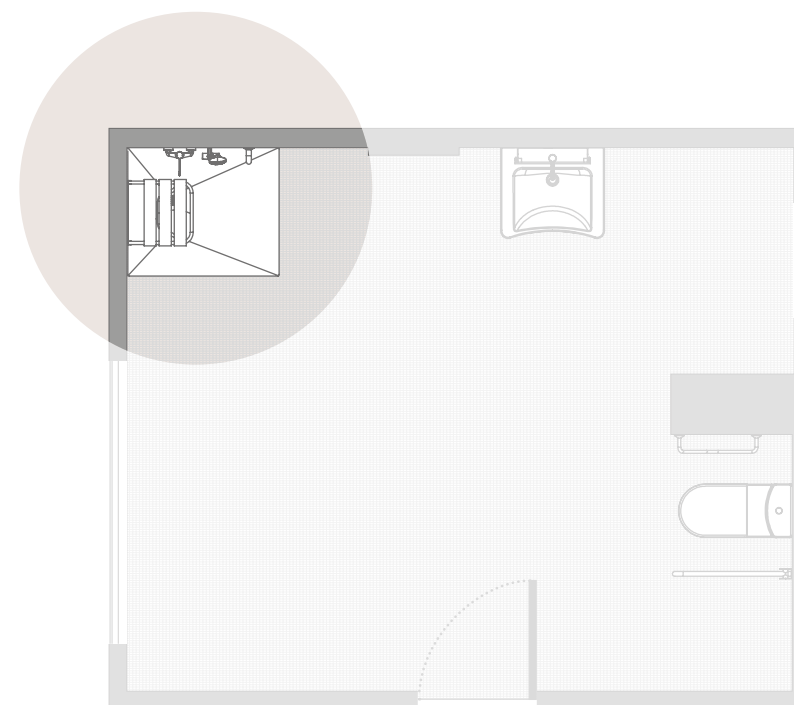
shower column

The shower area should be spacious. At least 80 cm or more if possible. In addition, we recommend having space for a second person, such as a caregiver.

Shower trays are a better option than bathtubs, as the latter limit mobility. Chairs are a highly recommended accessory. They can also fold-up in order to free up space when not needed. Install horizontal bars to assist when getting up from the chair or to feel safe while standing.

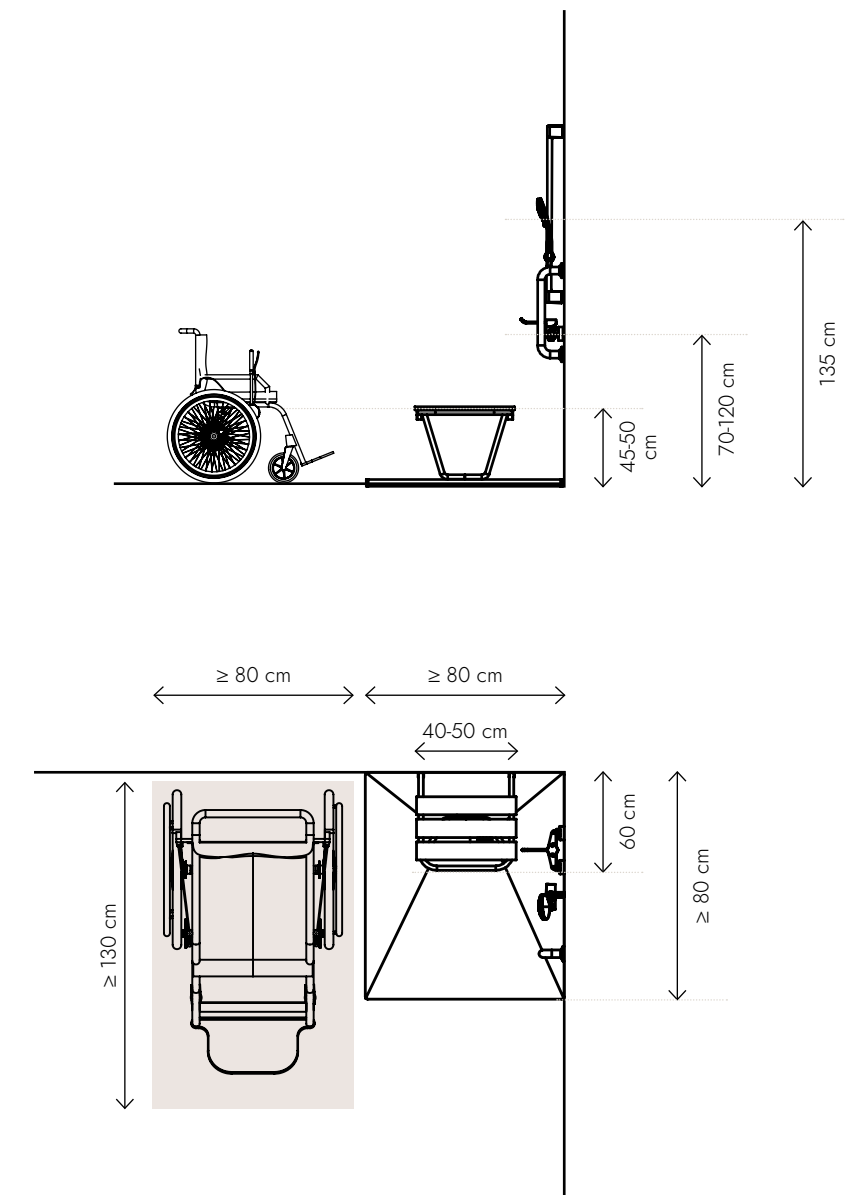
Shower taps should be easily operated with a lever handle and while seated on the chair. The best option is a hand shower that can be held from the seat.

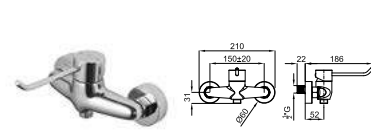
Emergency buttons can be installed to warn of a possible fall or slip.





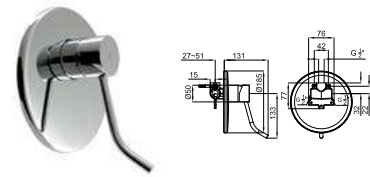
shower column





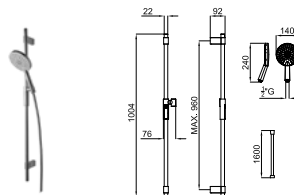
NEW 100294724 cromo

BELA SANI. Monomando externo ducha con cartucho cerámico de Ø35 mm y conexiones de 1/2". Distancia excéntricas 150 +/-20 mm. Maneta sanitaria. El caudal a 3 bares es de 14,2 l/min.



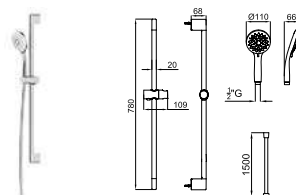
100063933 cromo

EASY. Monomando encastre ducha con cartucho cerámico de Ø40 mm y conexiones de 1/2". Maneta sanitaria. El caudal a 3 bares es de 35,69 l/min.

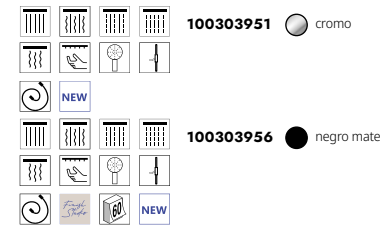


100215387 cromo

PURE LINE. PACK DUCHA PURE LINE. Incluye barra de ducha con soporte, teleducha PURE LINE 100180988 y flexible 100137848

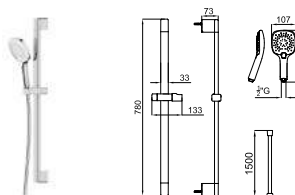


100303951 cromo



100303956 negro mate

ROUND. PACK DUCHA ROUND. Incluye barra de ducha con soporte deslizante, teleducha 100272333 con 5 funciones y flexible recubierto de PVC antitorción 100137847

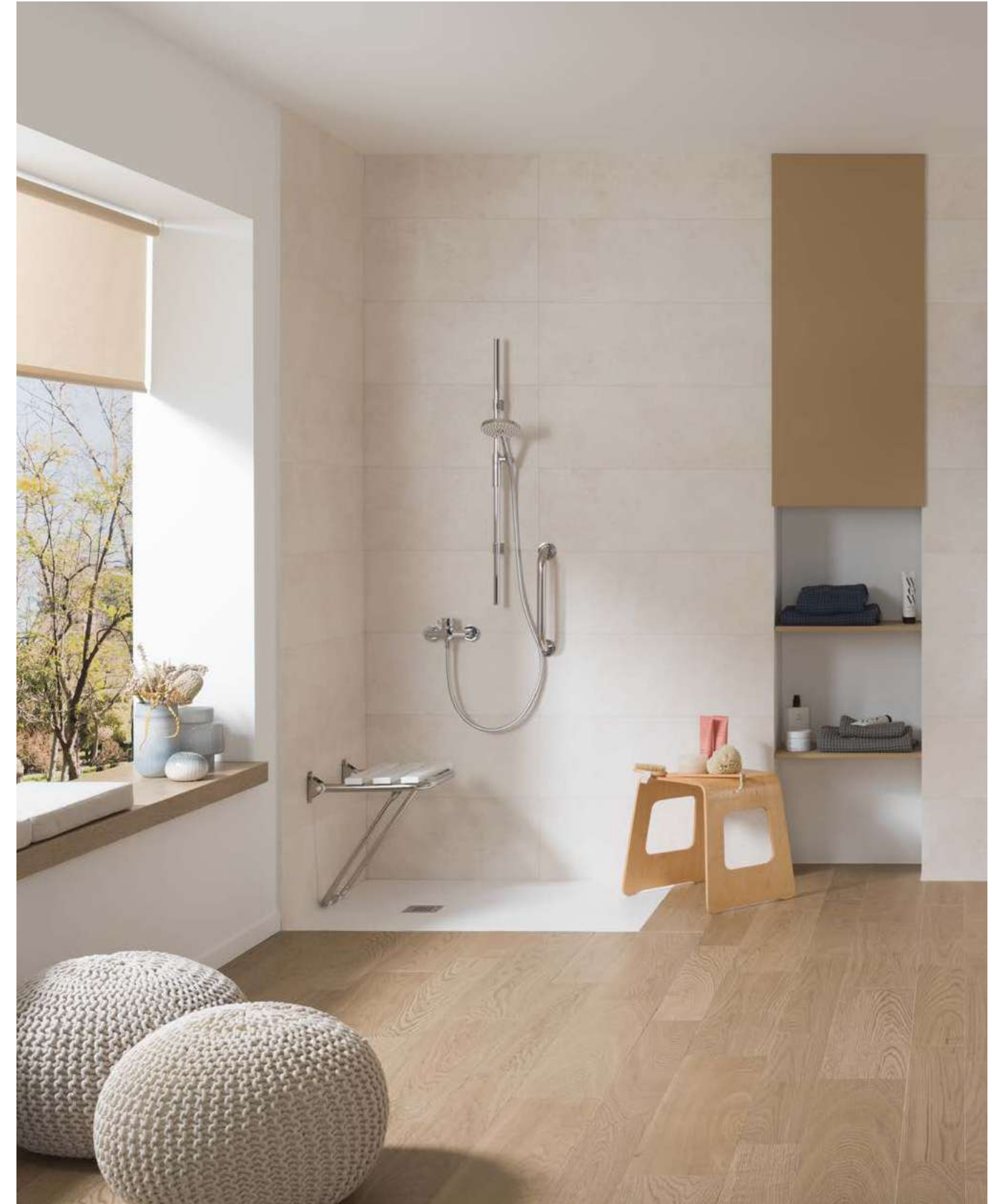


100303957 cromo



100303943 negro mate

SQUARE. PACK DUCHA SQUARE. Incluye barra de ducha con soporte deslizante, teleducha T&F SQUARE 100299627 con 3 funciones y flexible recubierto de PVC antitorción 100137847

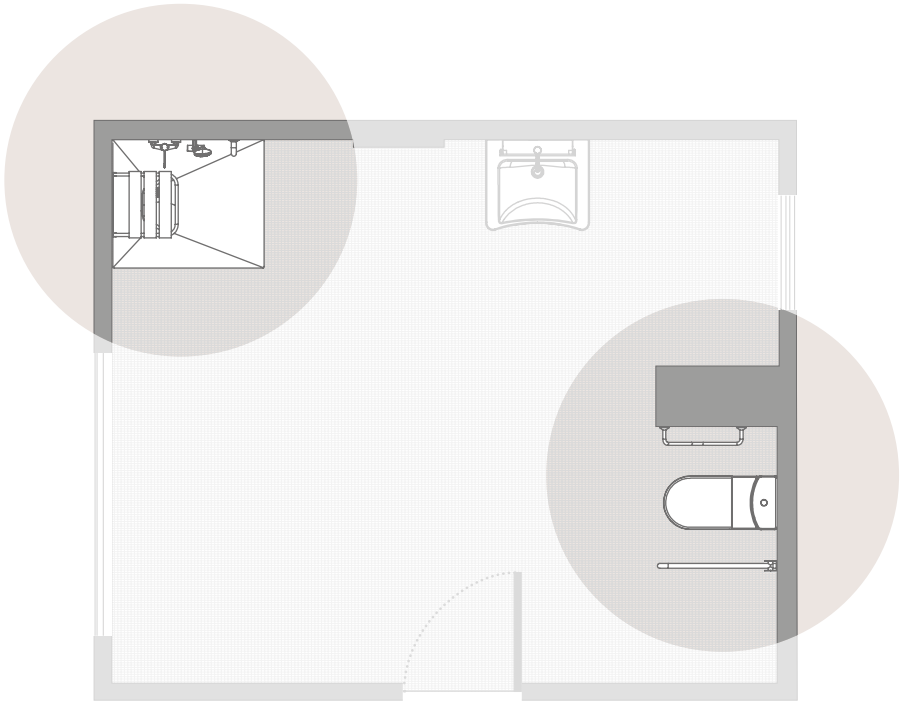


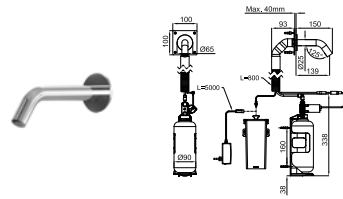


05

accessories

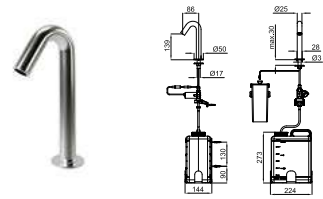
Support bars help with the most critical movements, such as sitting on the toilet or when entering the shower. It is dangerous to use accessories that are not capable of supporting heavy loads. Bars are usually installed near the toilet and shower. If the bathroom is large, bars can be installed on empty walls to help move between the different points.





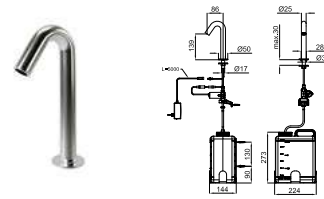
- 100308591** ● cromo
- 100308581** ● acero inox satinado
- 100308590** ● negro mate
- 100308580** ● acero inox satinado

ROUND. Caño encastre modelo Round para dosificación de jabón, a batería 6 pilas alcalinas D no incluidas, garrafa 1L (33.8 oz), viscosidad del jabón 100 - 3800 cPs, descarga standart 1.4cc (personalizable con el mando de control opcional), rango del sensor 35-155 mm +- 10 mm 1.38-6.10" +-0.39" (personalizable con el mando de control opcional). 100267018 incluido



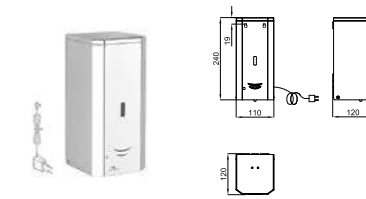
- 100283552** ● cromo

TOUCHLESS. Caño apoyo modelo Round para dosificación de gel desinfectante hidroalcohólico, a batería 6 pilas alcalinas D no incluidas, garrafa 6L (1.6 Gallons), viscosidad del gel hidroalcohólico 0 - 3800 cPs, descarga standart 1.0cc (personalizable con el mando de control opcional), rango del sensor 30-100 mm +- 10 mm 1.18-3.94" (personalizable con el mando de control opcional)



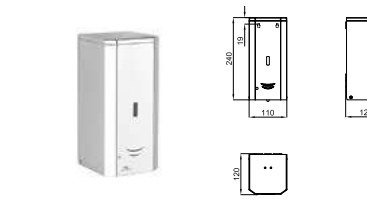
- 100283563** ● cromo

TOUCHLESS. Caño apoyo modelo Round para dosificación de gel desinfectante hidroalcohólico, trafo univ 12DC, garrafa 6L (1.6 Gallons), viscosidad del gel hidroalcohólico 0 - 3800 cPs, descarga standart 1.0cc (personalizable con el mando de control opcional), rango del sensor 30-100 mm +- 10 mm 1.18-3.94" (personalizable con el mando de control opcional)



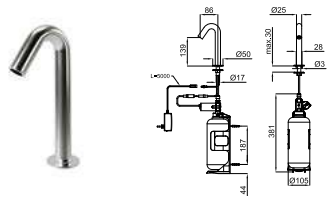
- 100206887** ● inox espejo

TOUCHLESS. Dosificador de jabón líquido / gel hidroalcohólico de accionamiento automático de 1L de capacidad. Fabricado en acero inoxidable AISI 304. Funciona con un transformador eléctrico de 9V 1A. Se recomienda que el jabón - gel hidroalcohólico tengan las siguientes características: contenido máximo de alcohol del 80%, densidad entre 0.9 y 1.35 kg/dm³, viscosidad entre 500 y 2.500 cps. No admite jabones ni geles que contengan cloro y tampoco partículas sólidas y abrasivas.



- 100206909** ● inox espejo

TOUCHLESS. Dosificador de jabón líquido / gel hidroalcohólico de accionamiento automático de 1L de capacidad. Fabricado en acero inoxidable AISI 304. Funciona con pilas alcalinas 6"AA"x 1.5V(9V) (no incluidas). Se recomienda que el jabón - gel hidroalcohólico tengan las siguientes características: contenido máximo de alcohol del 80%, densidad entre 0.9 y 1.35 kg/dm³, viscosidad entre 500 y 2.500 cps. No admite jabones ni geles que contengan cloro y tampoco partículas sólidas y abrasivas.



- 100283519** ● cromo

TOUCHLESS. Caño apoyo modelo Round para dosificación de jabón, a batería 6 pilas alcalinas D no incluidas, garrafa 1L (33.8 oz), viscosidad del jabón 100 - 3800 cPs, descarga standart 1.4cc (personalizable con el mando de control opcional 100297494), rango del sensor 30-100 mm +- 10 mm 1.18-3.94" (personalizable con el mando de control opcional). 100267018 incluido



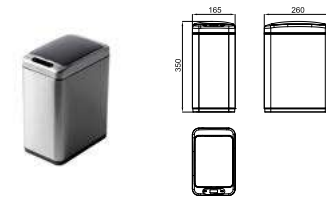
- 100297494** ● blanco

. Mando control remoto para dosificadores Noken de gel y de jabón de la serie TOUCHLESS. Permite selección de la cantidad de líquido a dosificar dentro de un rango disponible. Posibilidad de otras funciones accesorias de ayuda al usuario.



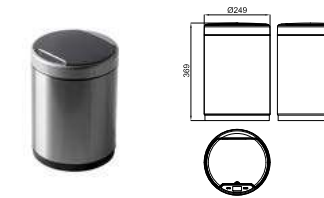
- 100267018** ● negro

TOUCHLESS. ADAPT. UNIV. DOSIF. 110-240V EU, US, UK



- 100298691** ● inox cepillado
- 100298685** ● negro

SQUARE. Papelera con sensor. Capacidad 8 L. Cierre Suave. Material acero inoxidable. Apertura y cierre automático. Incluye batería recargable y cable USB para la carga. Incorpora recipiente interno extraíble. A tener en cuenta la distancia mínima de detección del sensor en función del tipo de superficie. Para más información revisar las IDM.



- 100298701** ● inox cepillado
- 100298688** ● negro

ROUND. Papelera con sensor. Capacidad 9 L. Cierre Suave. Material acero inoxidable. Apertura y cierre automático. Incluye batería recargable y cable USB para la carga. Incorpora recipiente interno extraíble. A tener en cuenta la distancia mínima de detección del sensor en función del tipo de superficie. Para más información revisar las IDM.



Edition: 2022 April
Design: Noken Marketing Department
Photography: Noken Marketing Department
Edition: NOKEN DESIGN S.A.U.

The contents of this catalogue are protected by virtue of the Spanish Intellectual Property Act, Royal Legislative Decree 1/1996. The partial or total reproduction of this catalogue, without the express authorisation of Noken DESIGN is punishable under the Spanish Criminal Code. Reserves the right to cancel and/or change models or accessories without prior notice or replacement. The settings shown in this catalogue are design proposals for advertising purposes. In real situations in which the tiles are laid, we recommend to use as a guide for the installation, the technical specifications available on the Noken Price List.

O conteúdo deste catálogo está protegido pela Lei de Propriedade Intelectual, Real Decreto Lei 1/1996. Qualquer reprodução do mesmo, em parte ou na sua totalidade, sem a autorização expressa da Noken Design, S.A. pode ser sancionada em conformidade com o Código Penal. Reserva-se o direito legal de anular ou efectuar possíveis modificações aos seus produtos e acessórios sem aviso prévio nem substituição. Os ambientes que se mostram neste catálogo são sugestões decorativas de carácter publicitário, devendo-se utilizar como guia para a instalação, as fichas técnicas encont ram-se no PTC editado pela Noken.



noken
PORCELANOSA BATHROOMS